



# Laser and Surgical Procedures Examination (LSPE<sup>®</sup>)

**SITE INFORMATION & EQUIPMENT LIST**

**EXAM DATES:**  
**August 2023 – May 2024**

*April 18, 2023*

The information listed in this LSPE Site Information and Equipment List is for informational purposes only. There may be additional equipment or supplies on-site during the exam that may not be reflected in this manual. Additionally, equipment and supplies may change without warning.

This information is not intended to prepare candidates for the exam, but instead is intended to provide a general overview of equipment and supplies used during the exam. Candidates are reminded to thoroughly review the Evaluation Forms and Candidate Guide to adequately prepare for the Laser and Surgical Procedures Clinical Skills Examination.

## **NCCTO SITE INFORMATION & EQUIPMENT LIST OVERVIEW**

### **LSPE EQUIPMENT LIST**

#### **Laser**

- Quantel Optimis™ Fusion
- Dorfman Museum heads
- GenTeal® gel
- insEYEt SimulEye for LPI
- insEYEt SimulEye for SLT Laser
- insEYEt SimulEye for YAG Capsulotomy Ocular
- Instruments Hwang-Latina 5.0 SLT Laser Lens w/ Flange
- Ocular Instruments Abraham Iridectomy YAG Laser Lens
- Ocular Instruments Abraham Capsulotomy YAG Laser Lens

#### **Surgical**

- Optivisor
- TOMLOV DM401 HDMI Microscope
- Katena Snider Suturing Forceps, 0.12mm
- Katena Helveston Tying Forceps standard, smooth jaws
- Katena Castroviejo Forceps 0.3mm 1x2 teeth with tying platform
- Katena Hunt Chalazion Forceps
- Katena Eye Scissors Large Rings Straight
- Katena Eye Scissors Standard Straight
- Katena Wescott Scissors
- Katena Castroviejo Needle Holder Straight with lock
- Katena Castroviejo Needle Holder Straight without lock
- Katena Meyerhoefer Curette #2
- Integra Disposable Scalpel-11
- Limbs & Things Sebaceous Cyst Pad
- Nasco Life/form LF01046/01047 Facial Suturing Trainer (Eye Model)
- Sharpoint Plus Surgical Suture-Silk Black Braided 18"/45cm 6-0
- Surgical Tray
- Surgical Marker
- Medical Gauze
- Ophthalmic drape 15"x15"

## LIGHTING

### MAIN OVERHEAD LIGHT SWITCH, DIMMER SWITCH, & SLIDER

Located behind computer workstation

Location of this switch is the same in EVERY exam room

Main overhead lighting switch is located on the LEFT

Dimmer switch is located on the RIGHT

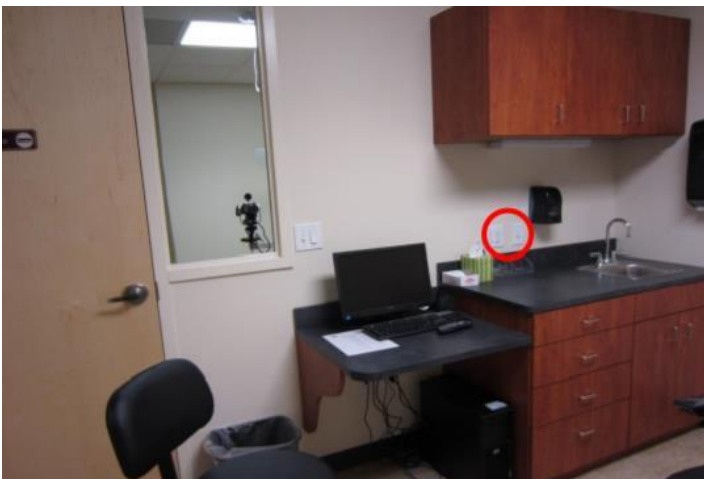
Slider to adjust dimmer brightness is on the RIGHT side of the dimmer switch

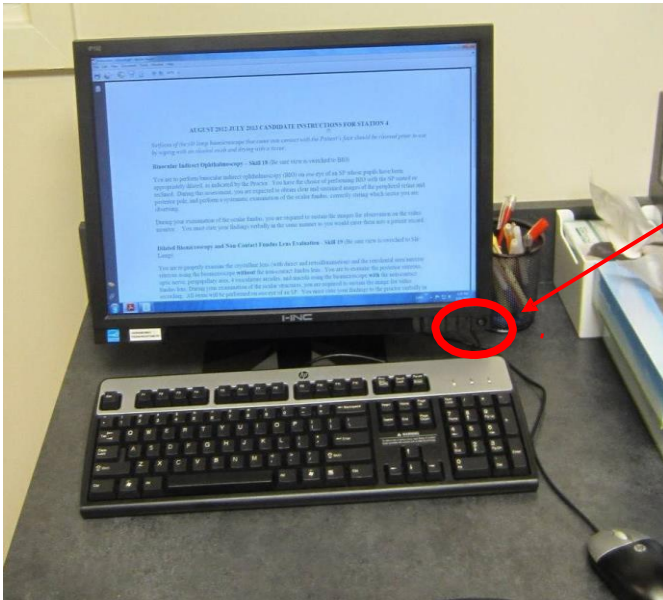


### UNDER CABINET LIGHT SWITCH

Located above sink counter, by soap dispenser

Location of this switch is the same in EVERY exam room





**Computer Workstations** Display station instructions, not an item-by-item list, but a brief overview of skills expected to be performed.

Turn the monitor off/on by pressing the button on the bottom right corner.

### **Repeat Policies**

Posted on the back of the exam room doors, next to the computer workstation.



Pens & pencils are provided in each station



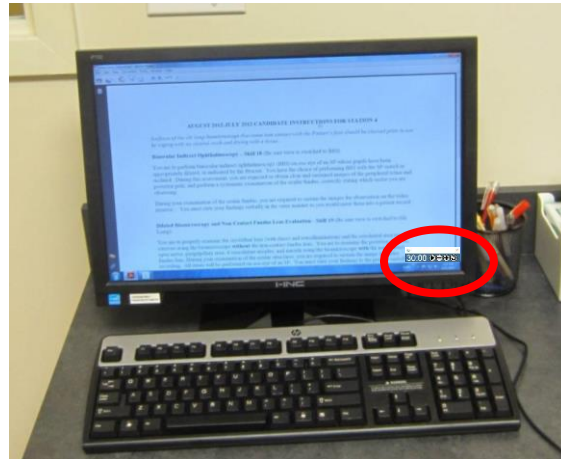
Band-Aids are available in all stations in the event an injury occurs



Countdown clocks on the computers are **NOT THE OFFICIAL CLOCKS** that determine a candidate's time.

**Candidates are allotted 40 minutes for the laser section and 30 minutes for the surgical section.**

A countdown clock will be available on the exam room computer monitor for candidates to use. Use of the countdown clock is optional.



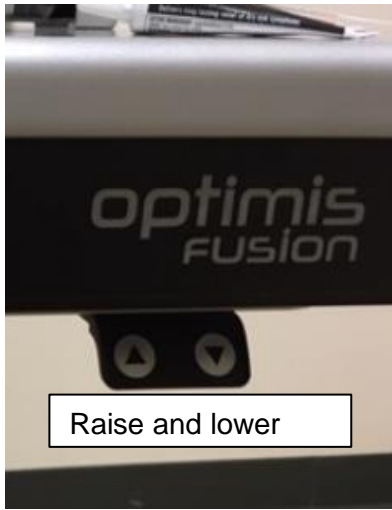
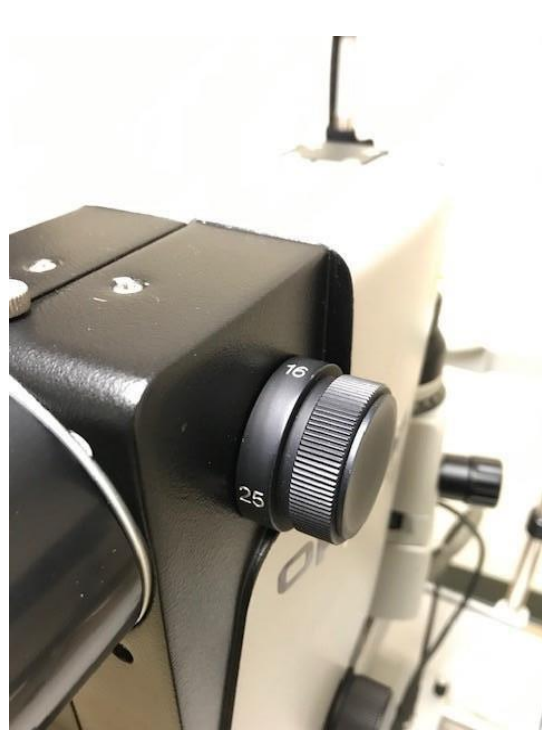
Once the announcement begins to play, that is when official testing time begins. Once the announcement plays ending the exam, time ends. Candidates wishing to use the countdown clock in the rooms must press the START button to begin the countdown clock. There will always be a delay between when the announcement plays and when a candidate presses START thus the time on the computer will always be less than the allotted minutes. Using the countdown clock in the room is optional and only to provide candidates assistance in determining the amount of time, digitally, remaining in the station. Again, these clocks are not the official timekeepers of the exam.

# LASER SECTION ROOM/EQUIPMENT

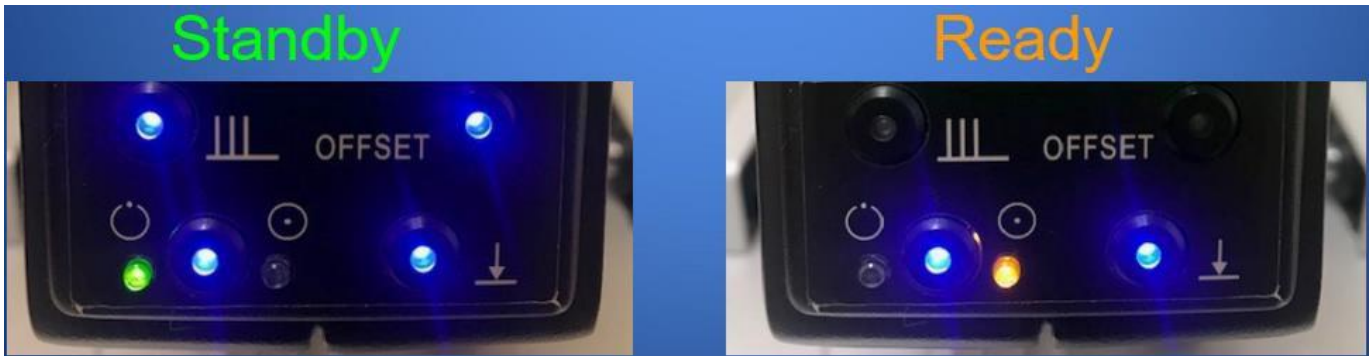
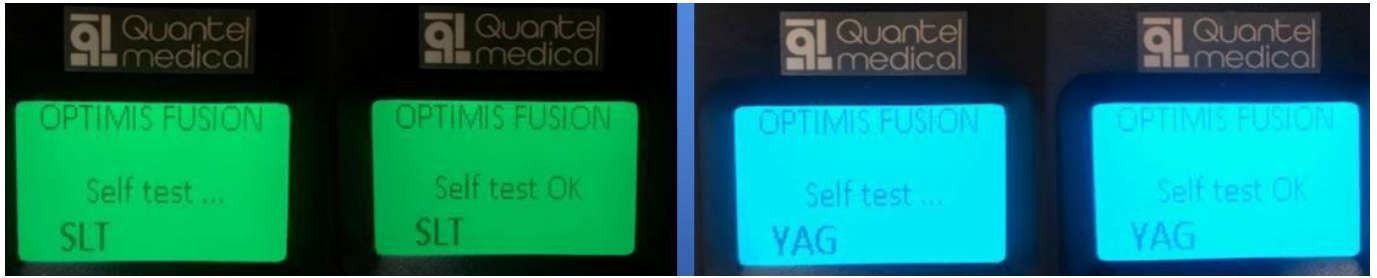
## LASER OVERVIEW

Quantel Optimis™ Fusion

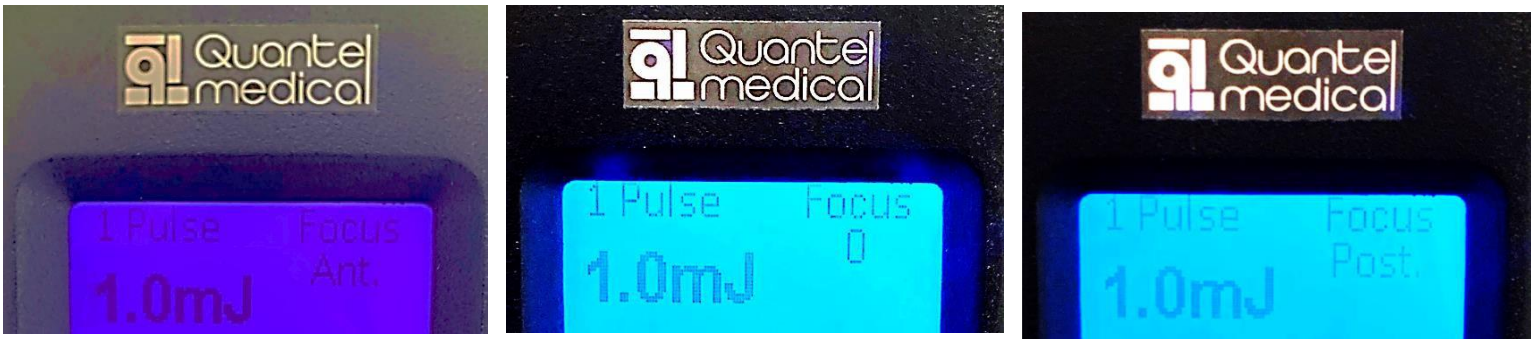




## SELF TESTS



## OFFSET SETTINGS



## LASER SCREEN DISPLAY

Example purposes only; may not reflect correct settings.





## LASER SECTION LENSES



**Hwang-Latina 5.0 SLT Laser Lens w/  
Flange**



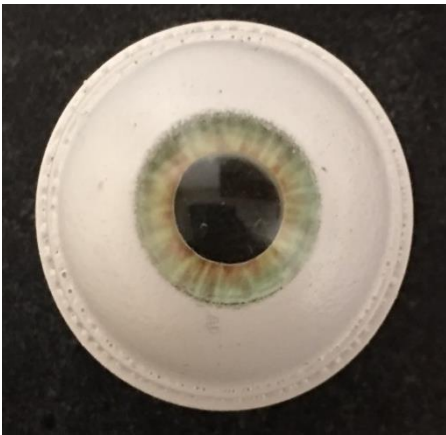
**Abraham Iridectomy YAG Laser  
Lens**



**Abraham Capsulotomy YAG  
Laser Lens**

## LASER SECTION EYE MODELS (Before treatment)

SLT Laser Eye Model



LPI Eye Model



YAG Eye Model

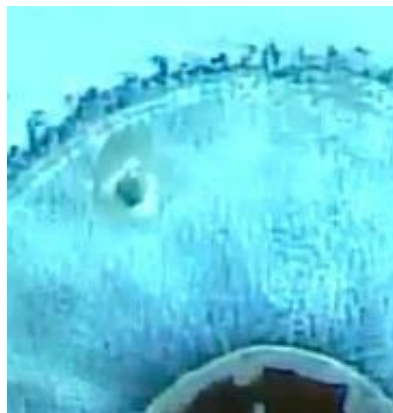


## LASER SECTION EYE MODELS (After some treatment – sample purposes only)

SLT Laser Eye Model



LPI Eye Model



YAG Eye Model

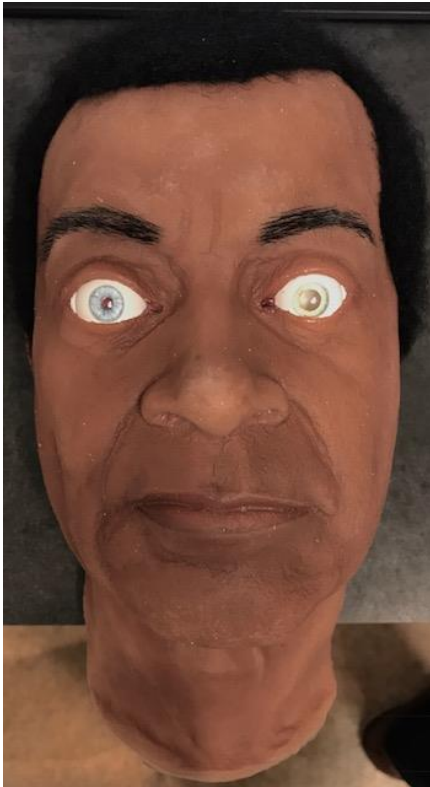


## GEL FOR MODEL EYE PREPARATION



**MODEL PATIENT FOR LASER SECTION (SLT & PI model eyes)**

**SLT**



**LPI with an iris crypt circled**



**MODEL PATIENT FOR LASER SECTION (YAG Capsulotomy model eyes)**



# SURGICAL SECTION ROOM & EQUIPMENT

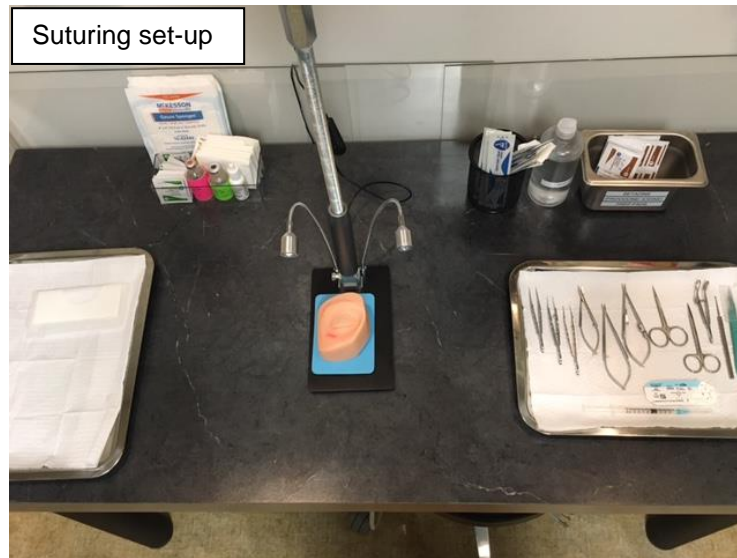


Suturing set-up

The suturing model will be placed on the microscope's base plate. The screen is not intended for candidate use.



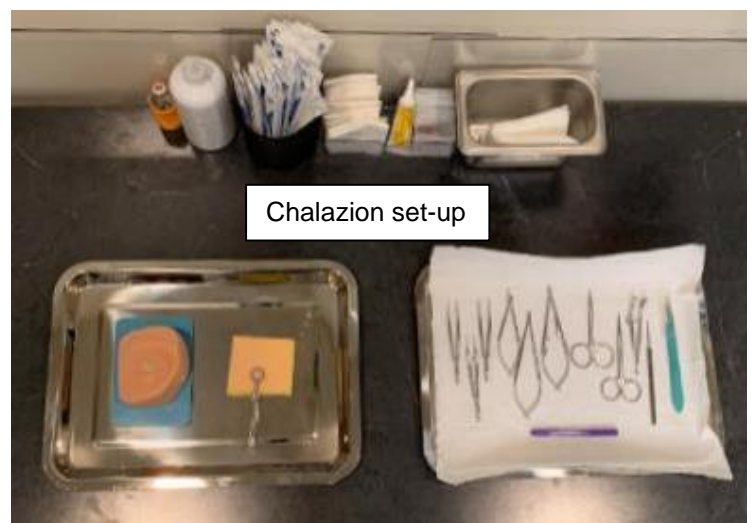
HDMI Microscope



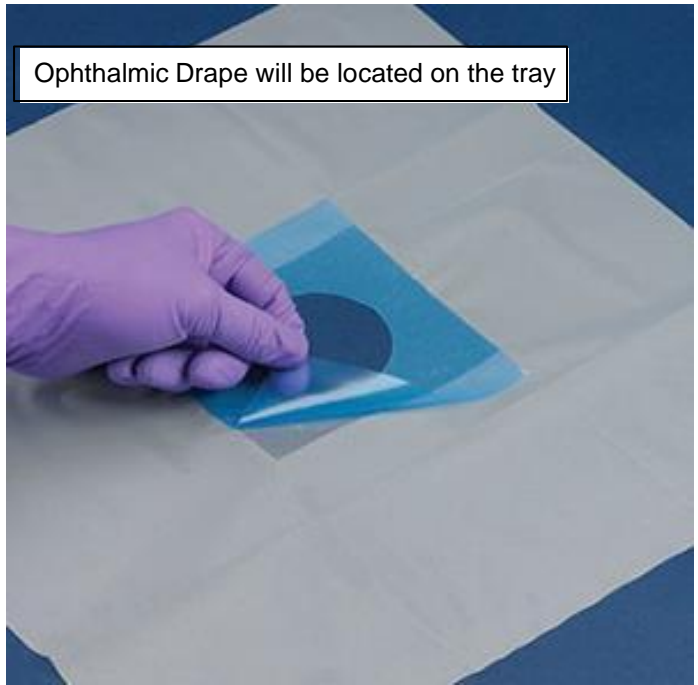
Suturing set-up



Chalazion set-up



Chalazion set-up



## SURGICAL INSTRUMENTS

**Katena Helveston Tying Forceps (K5-5420)**



**Katena Snider Suturing Forceps, 0.12mm (K5-2550)**



**Katena Castroviejo Forceps 0.3mm 1x2 teeth with tying platform (K5-2510)**



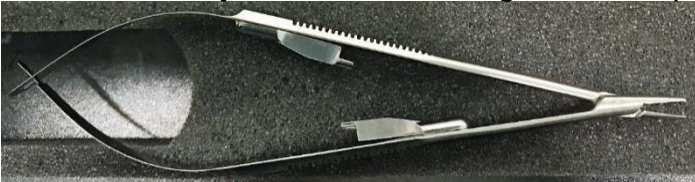
**Katena Wescott Scissors (K4-4100)**



**Katena Castroviejo Needle Holder Straight without lock (K6-1510)**



**Katena Castroviejo Needle Holder Straight with lock (K6-1500)**



**Katena Eye Scissors Large Rings Straight (K4-7440)**



**Katena Eye Scissors Standard Straight (K4-7400)**



**Katena Hunt Chalazion Forceps (K5-9500)**



**Katena Meyerhoefer Curette #2 (K3-1020)**



**Integra Disposable scalpel -11**



## SUTURING MODEL TRAY

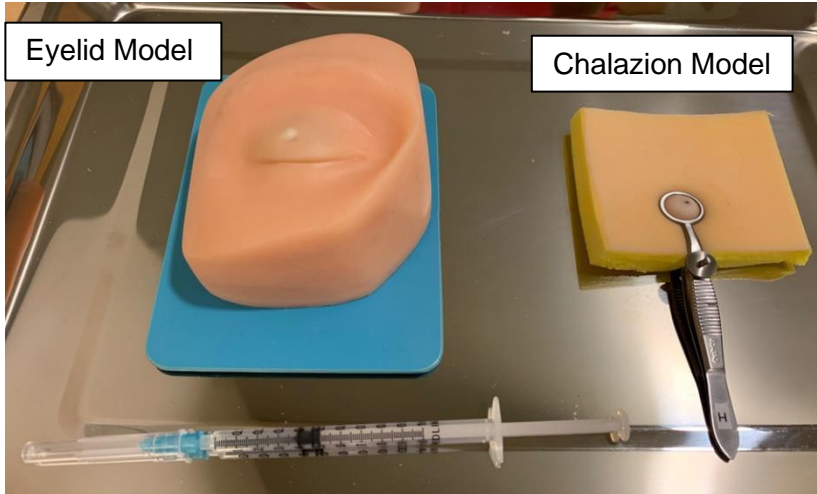
Nasco Life/form LF01046/01047 Facial Suturing Trainer (Eye Model)



## FULL SURGICAL TRAY: SUTURING

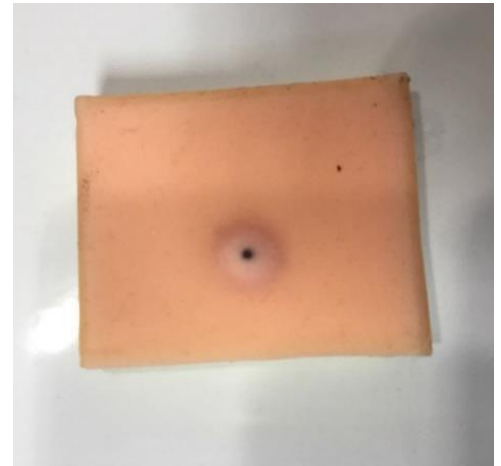


## CHALAZION MODEL TRAY



**Limbs & Things Sebaceous Cyst Pad (Chalazion model)**

**Nasco Life/form LF01046/01047 Facial Suturing Trainer (Eyelid model)**



## FULL SURGICAL TRAY: CHALAZION EXCISION

